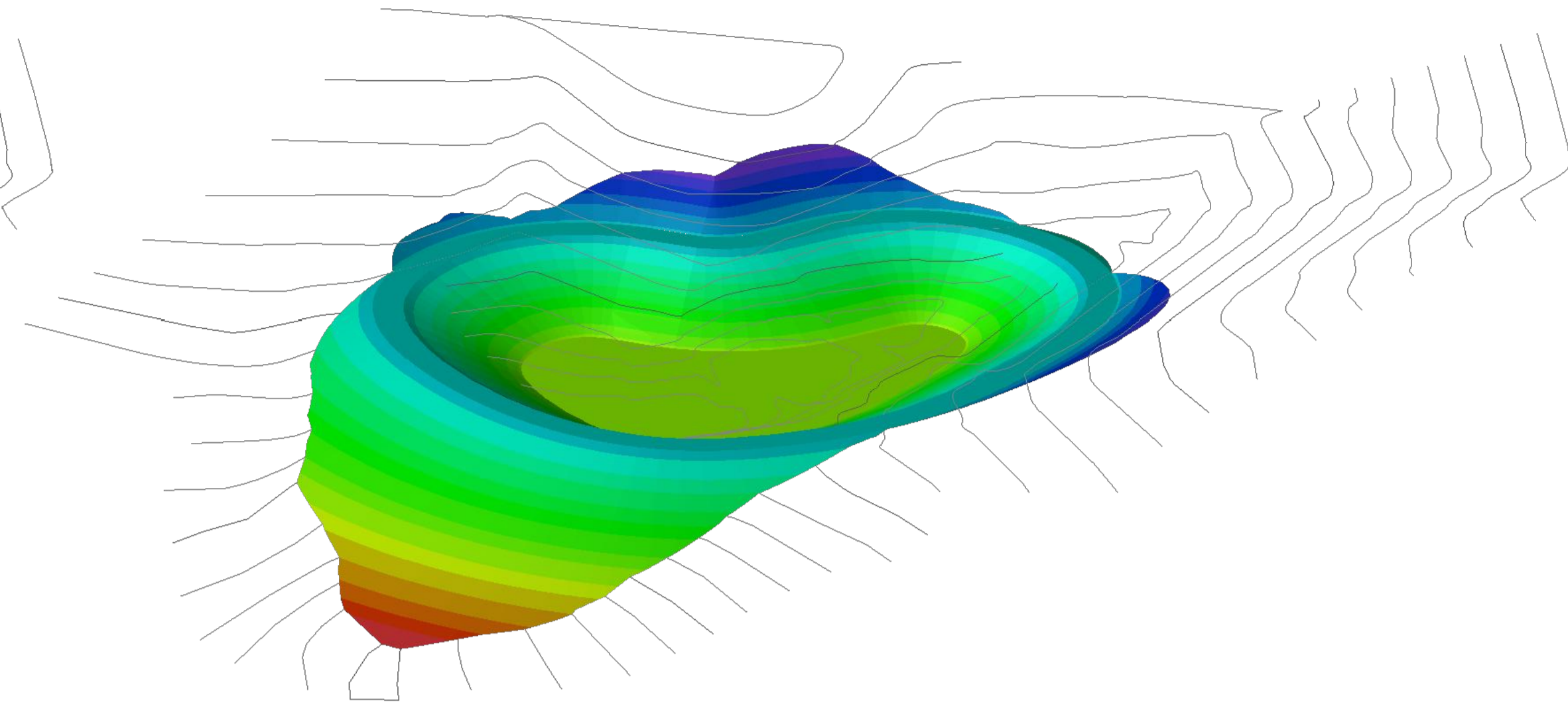
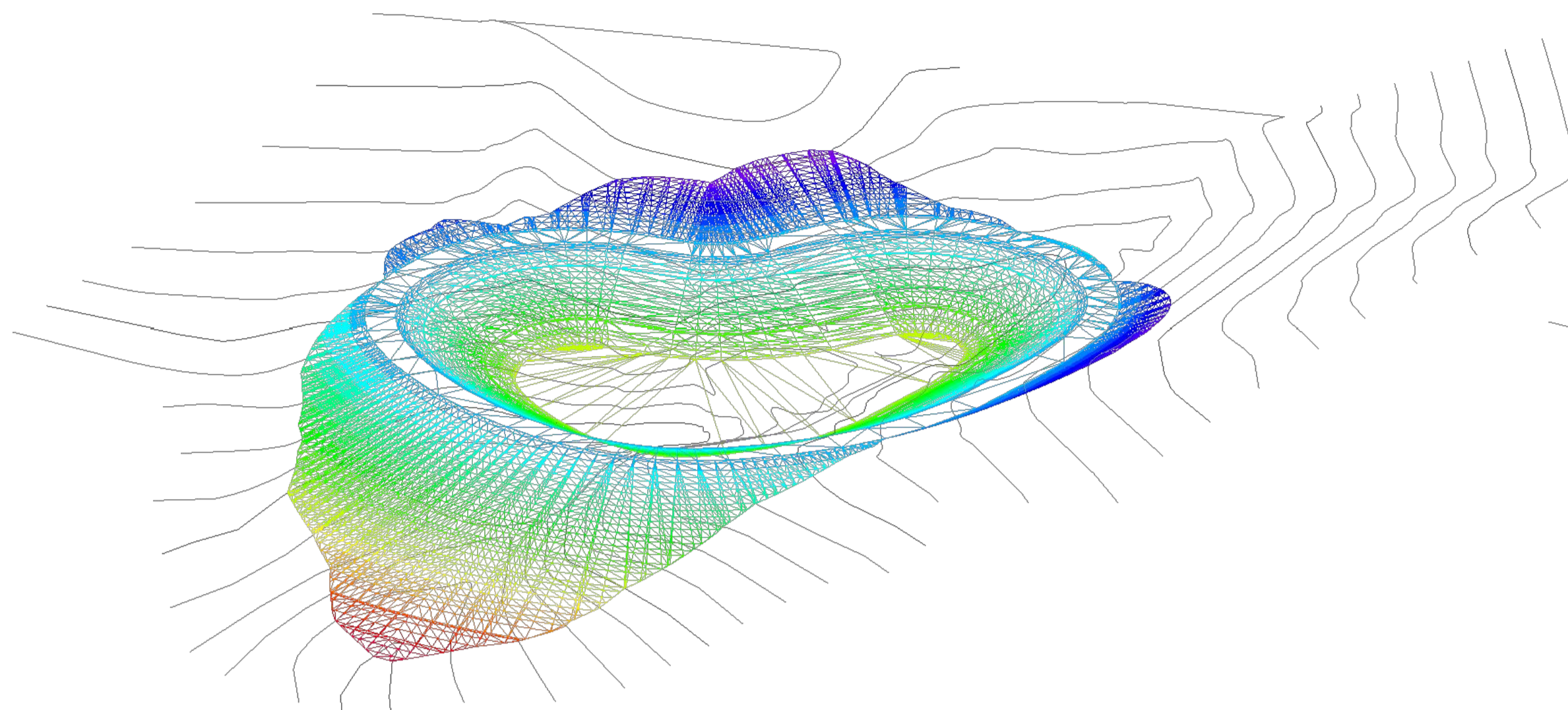


Processing 3D made by Autodesk Civil 3D

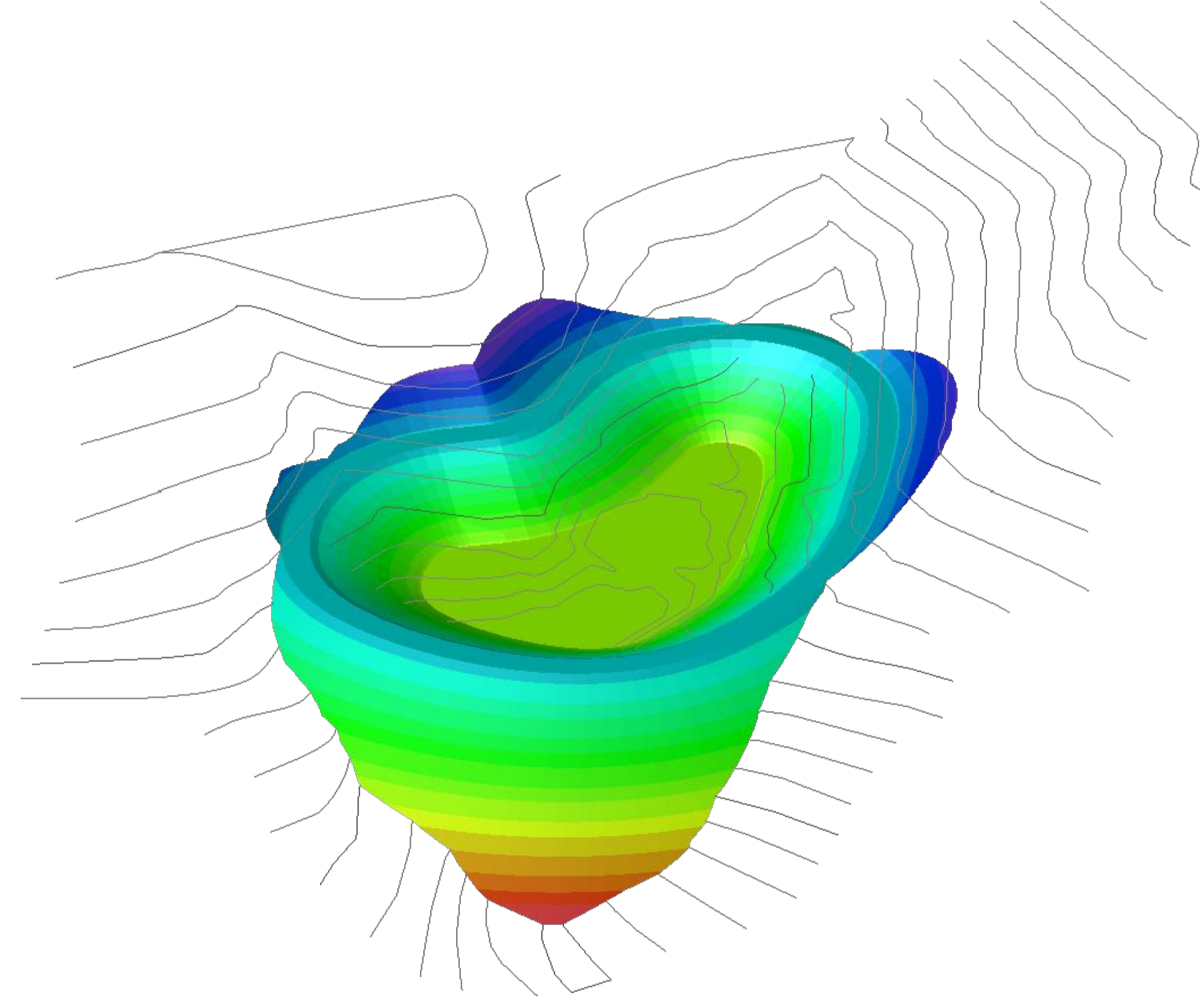
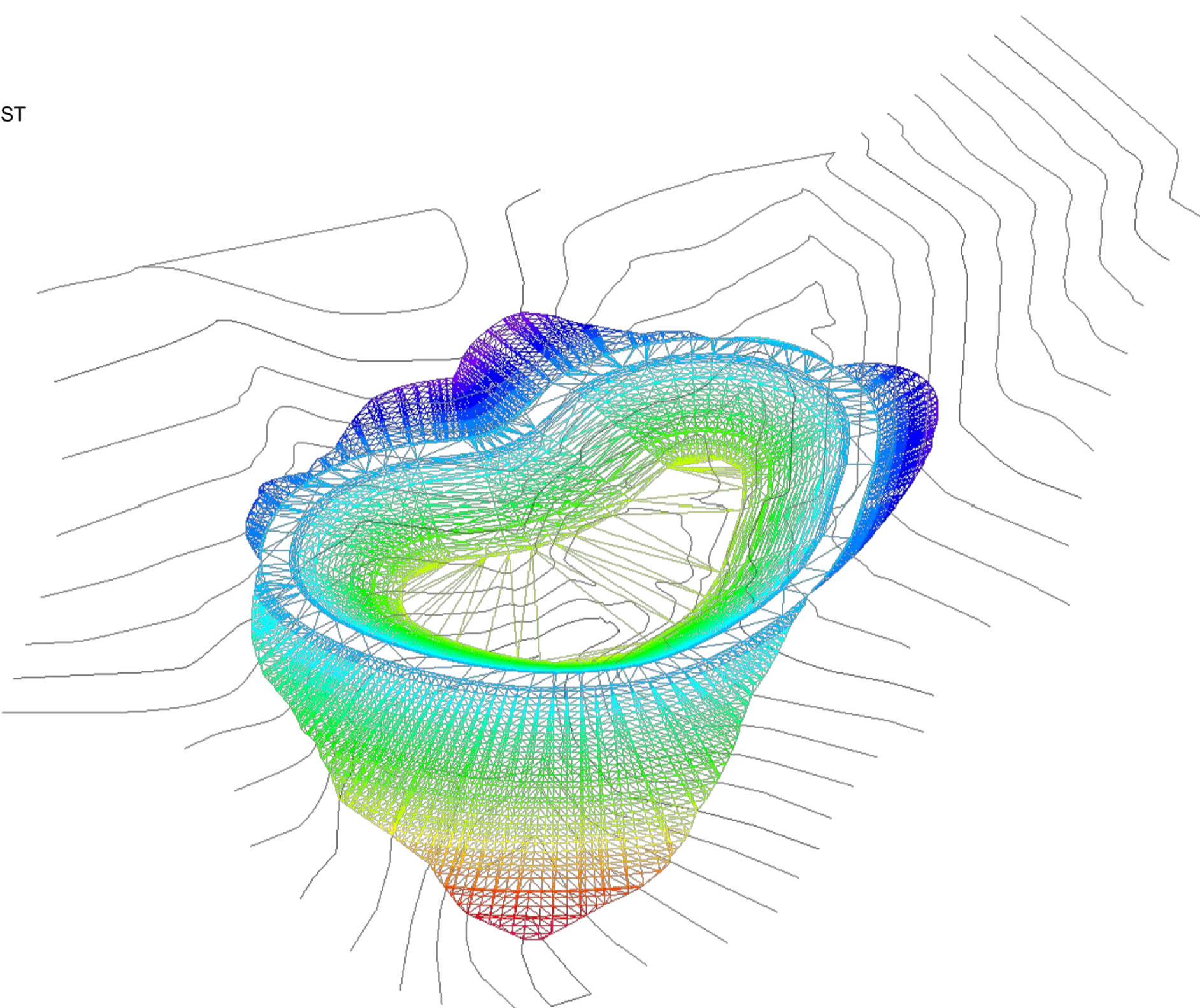
Excavation volume [mc]	Excavation volume increase [%]	Correct Excavation volume [mc]	Reporting volume [mc]	Δ Volume [mc]
4,999.13	23%	6,148.93	6,129.70	19.23

Volumes of cut and fill are almost balanced.

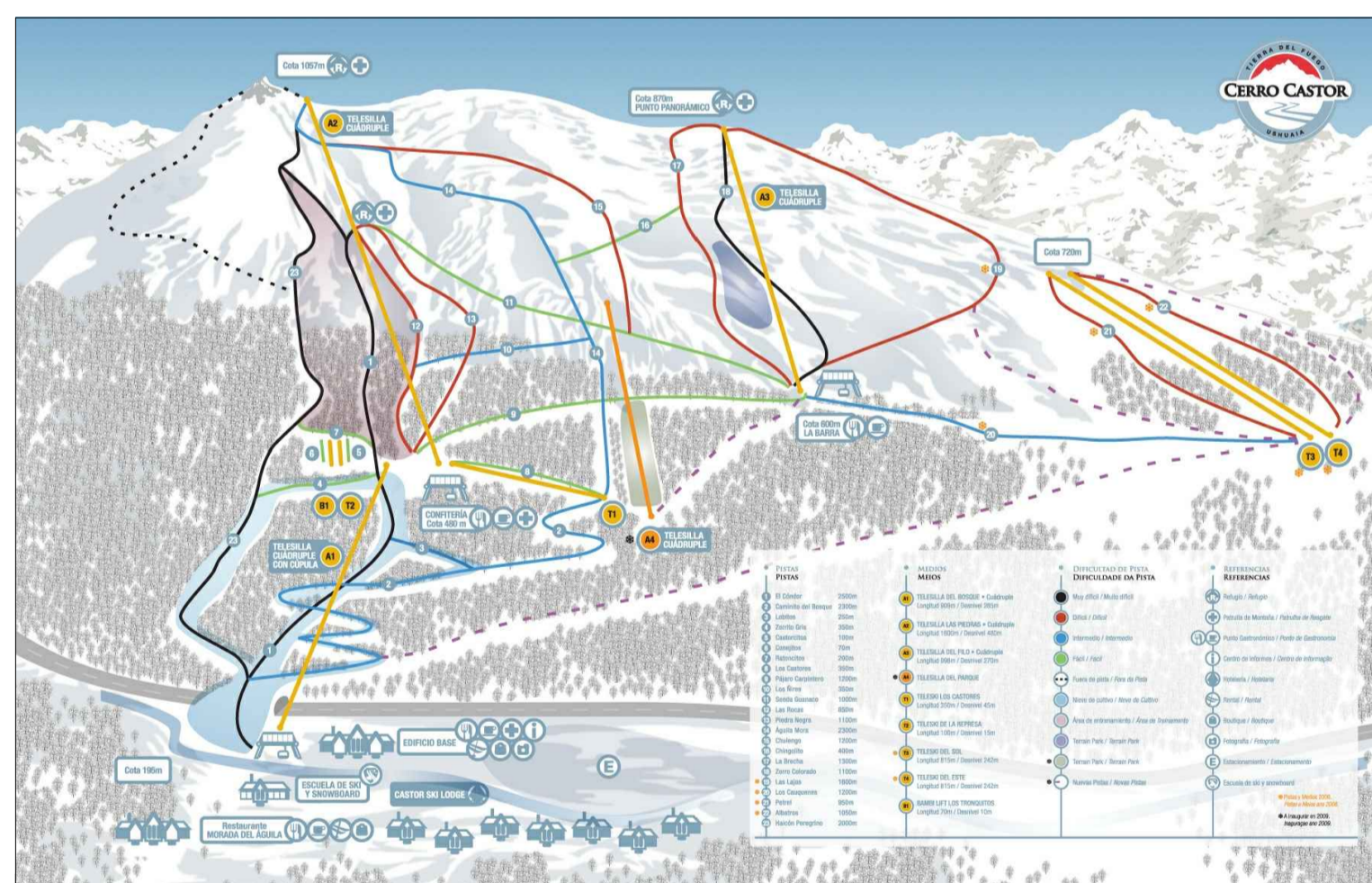
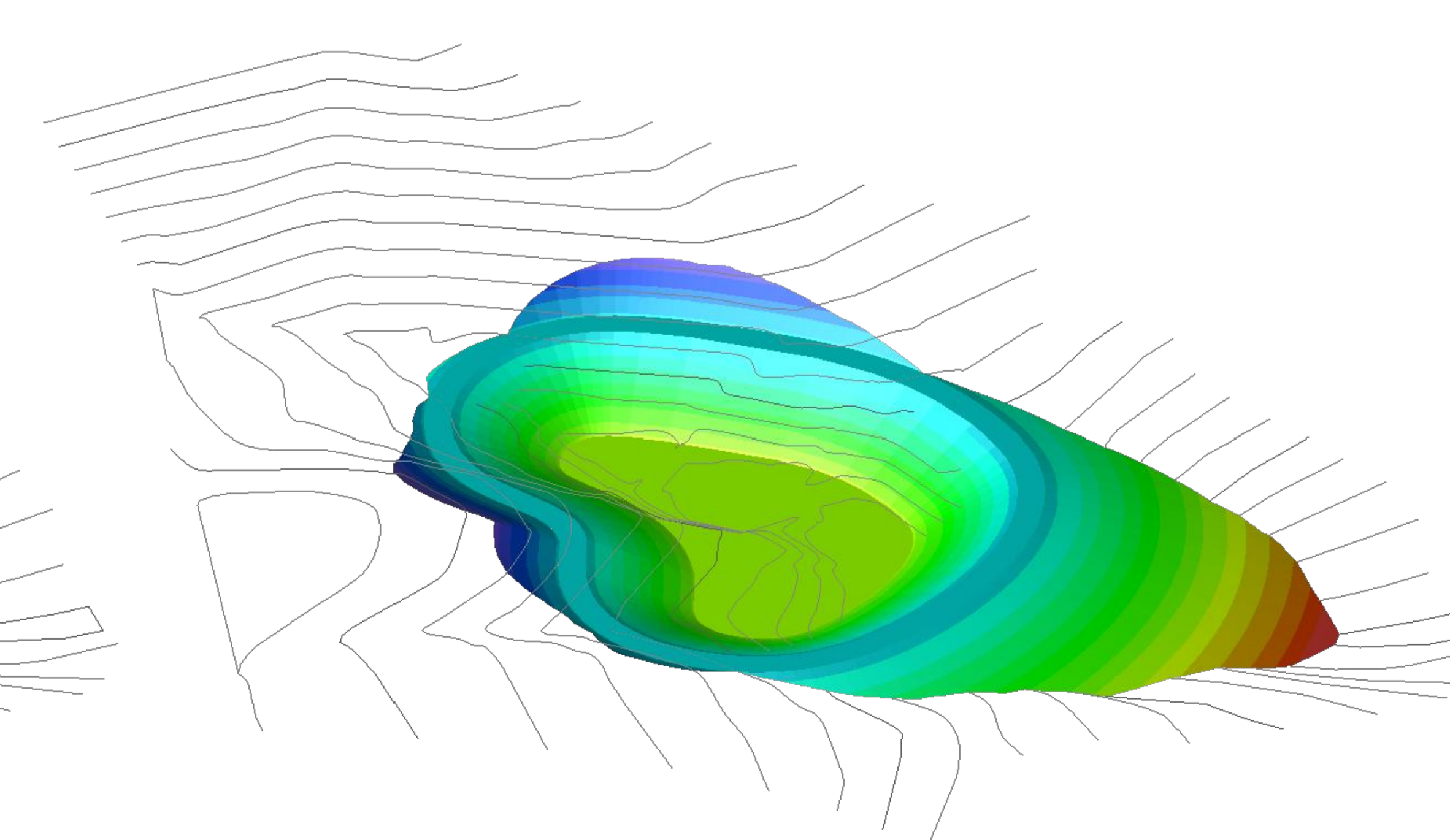
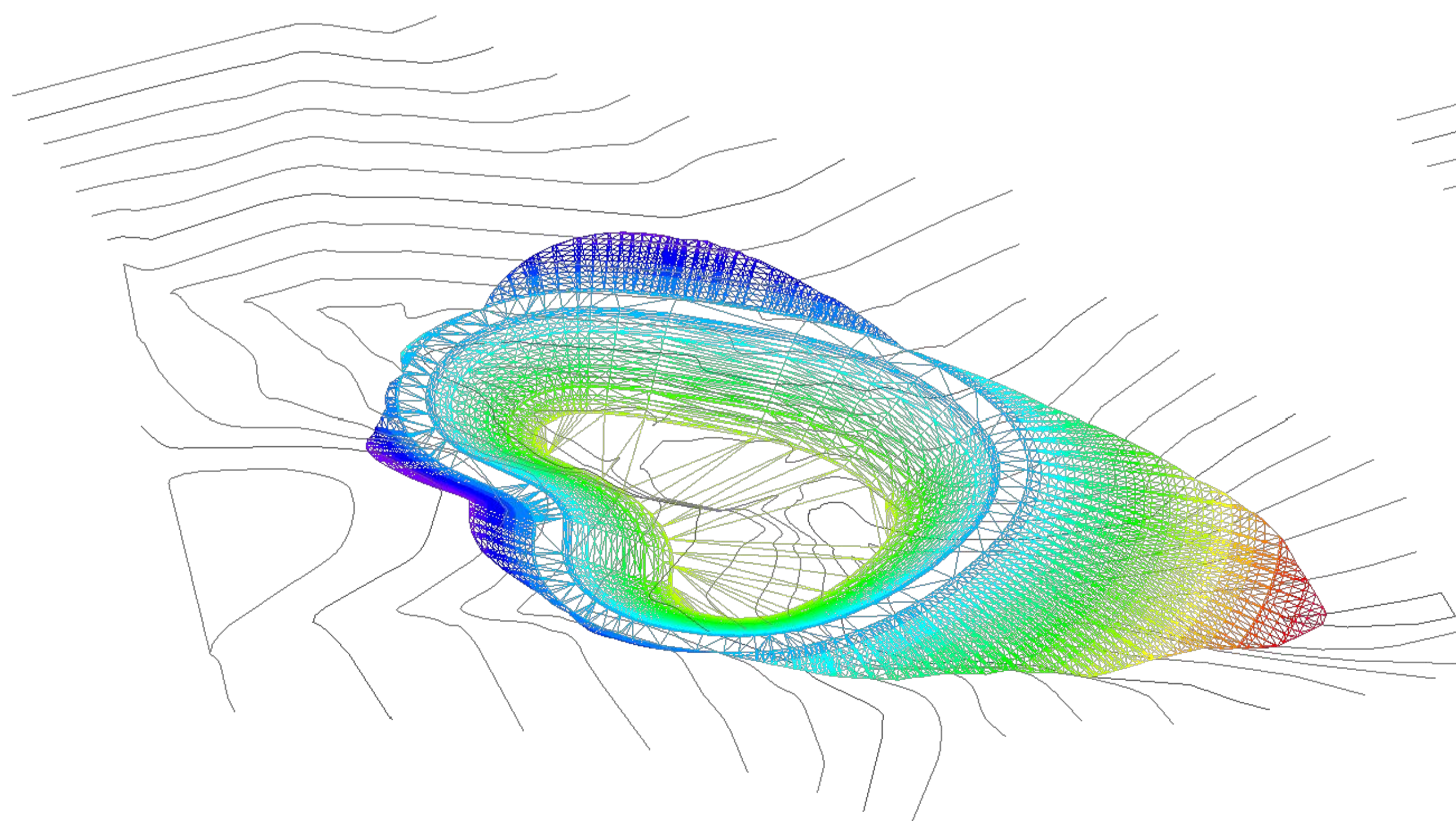
VIEW FROM THE NORTH



VIEW FROM THE EAST



VIEW FROM THE SOUTH



NEW LAKE FOR ARTIFICIAL SNOW - CERRO CASTOR -

Object:
RENDERING 3D

Customer:
CERRO CASTOR S.A
San Martin 740 - 9410 USHUAIA
Tierra del Fuego - ARGENTINA
Cuit: 30-6757897-7

Designers:
PROALPE
INTEGRATED ENGINEERING DESIGN
ENGINEERING COMPANY

of ing. Giordano Farina e ing. Ivan Veronesi
via della Cervara, 6 - 38100 Trento - Italy tel. 0461-26.12.02 fax. 0461-26.62.90 e-mail. info@proalpe.it

Job n. 45/14

Date 05/2015

Rev. 00

Scale a vista

Plan

E.D.06

Rev.	Date	Issued for:	Designed by	Controlled by	Approved by
00	05/2015	Authorization	ing. Valentina Miotto	ing. Ivan Veronesi	ing. Giordano Farina

The present study is intellectual property of the author. It is forbidden use, copy, reproduce in whole or part, in any form, texts, drawings, graphics and photos without the written permission of the author.