

- LEGENDA**
- River and small lakes
 - Actual contours
 - Local plants
 - Cauquenes ski run

PHOTO 1



PHOTO 2



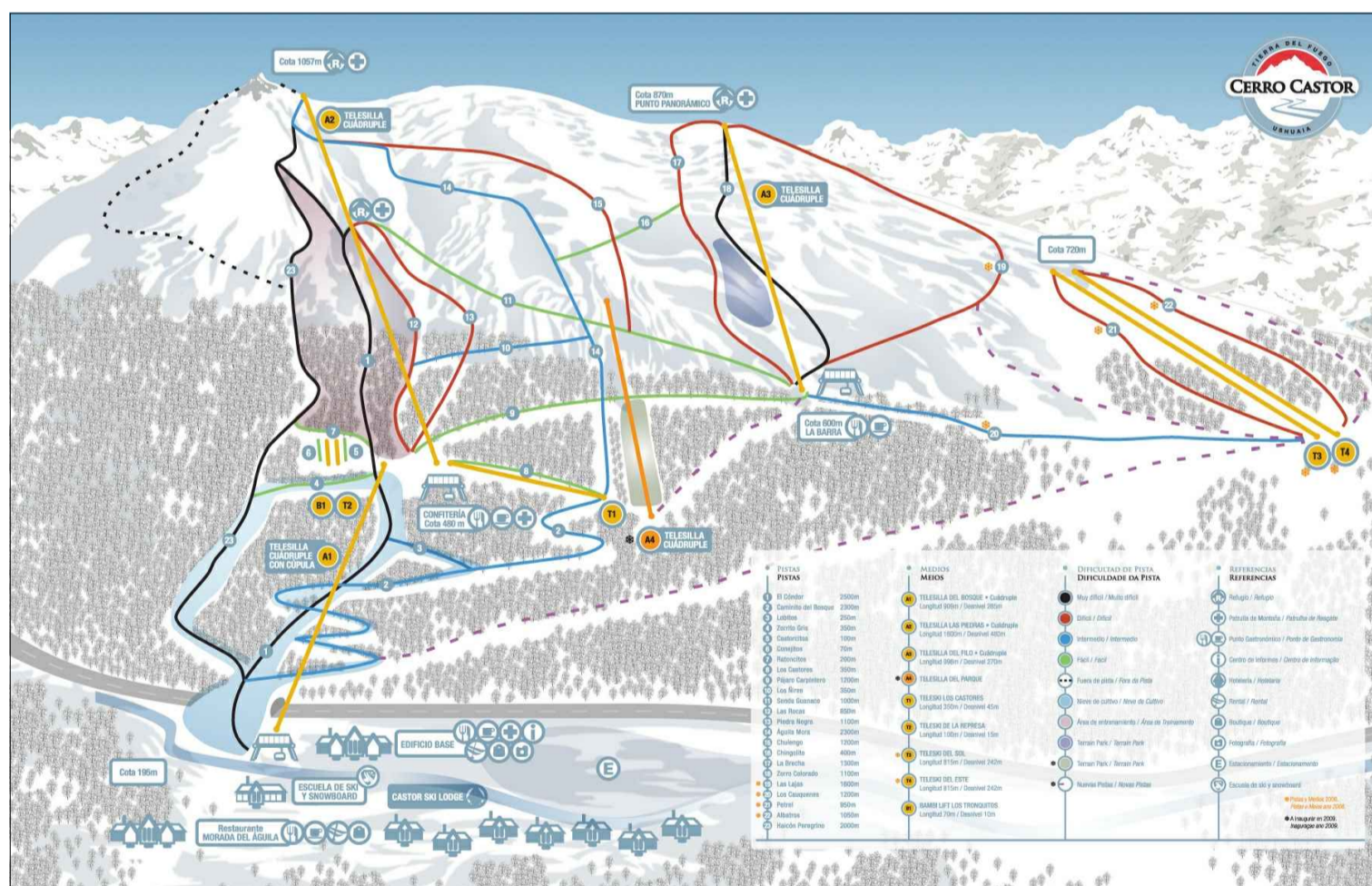
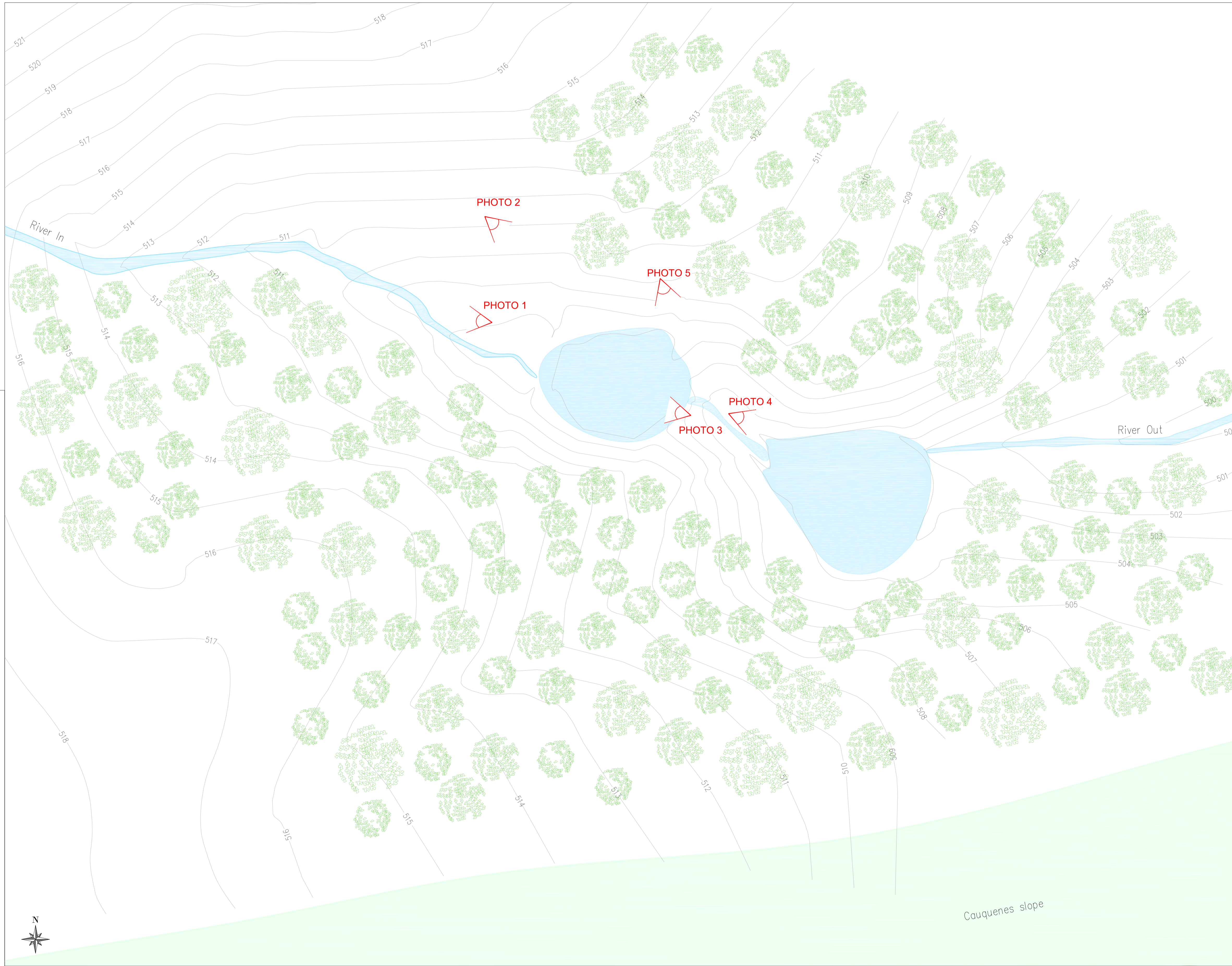
PHOTO 3



PHOTO 4



PHOTO 5



**NEW LAKE FOR ARTIFICIAL SNOW
- CERRO CASTOR -**

Object:
ACTUAL PLAN

Customer:
CERRO CASTOR S.A
San Martin 740 - 9410 USHUAIA
Tierra del Fuego - ARGENTINA
Cuit: 30-67578977-7

Job n.
45/14

Date
05/2015

Designers:
PROALPE
INTEGRATED ENGINEERING DESIGN
ENGINEERING COMPANY

Rev.
00

Scale
1:500

Plan
E.D.01

of ing. Giordano Farina e ing. Ivan Veronesi
via della Cervara, 6 - 38100 Trento - Italy tel. 0461-26.12.02 fax. 0461-26.62.90 e-mail. info@proalpe.it

Rev.	Date	Issued for:	Designed by	Controlled by	Approved by
00	05/2015	Authorization	ing. Valentina Miotto	ing. Ivan Veronesi	ing. Giordano Farina

The present study is intellectual property of the author. It is forbidden use, copy, reproduce in whole or part, in any form, texts, drawings, graphics and photos without the written permission of the author.